

Allans Walk Artist Run Space

Exhibition Proposal and Application Guidelines (for exhibitions January - June 2011)

Allan's Walk Artist Run Space, founded in 2000 in Bendigo, is the longest running artist run space in Central Victoria and has established itself as an independent arts organisation supporting and developing infrastructure for emerging artistic practice across a diversity of art forms.

A. MISSION for ALLAN'S WALK ARTIST RUN SPACE INC

Allans Walk Artist Run Space (AWARS) exists to support emerging regional artists, as well as established artists and curators (regional and non-regional) who are willing to experiment and take risks. AWARS promotes a range of innovative contemporary art practices including visual and audiovisual arts, new media, sound, design, craft, literature and live arts by local, national and international practitioners through the presentation of a program of exciting and challenging artworks. AWARS hopes to create a supportive environment for cultural exchange by encouraging artists to interact and collaborate, by encouraging the local community to engage in innovative contemporary art practice (local and national) by accessing AWARS programs, and to use the space as a hub for art-related activities.

B. THE INVITATION

Allans Walk Artist Run Space (AWARS) invites proposals by artists and curators producing innovative, challenging and critical contemporary art, including visual and audiovisual arts, new media, sound, design, craft, literature and live art. We invite applications for solo and group exhibitions, and curated projects.

- AWARS welcomes proposals by emerging and established practitioners, with a preference for showcasing emerging talent and providing a venue for established artists to experiment and take risks. Being a Bendigo-based gallery, at least half of the program will be allocated to Central Victorian artists, but we encourage applications from metropolitan and other regional areas. High quality local student work will also be considered.
- AWARS will select proposals with a view to producing a first class program which balances emerging and experienced artists, regional and metropolitan artists, and will present a broad range of media and critical approaches.
- Apart from gallery exhibitions & installations we are interested in proposals for one off events, performances, workshops, forums and artist in residence projects.
- Applications can be for one or both gallery spaces.
- AWARS also encourages catalogue essays written by or commissioned by artists & curators to critically engage with their exhibited works. Critical responses, which may be published on our website, are also welcomed.
- AWARS is developing the space as a hub for art-related activities, encouraging artists and the public to use the space for information dispersal. This will include access to a library of art literature.
- In addition to our application-based program AWARS reserves the right to invite guest curators or artists to maintain our high quality program.

Fees: AWARS is currently investigating a fee structure and booking deposit scheme for 2011 to assist with operating costs. This will be resolved well before the closing date. Refreshments for openings are the artist's responsibility.

Exhibition Duration: Standard exhibition duration is 4 weeks, including bump-in and bump-out, but this is negotiable. Applicants are asked to sit the show one day per week for the duration of the show. This is also negotiable.

AWARS gratefully acknowledges the support of the City of Greater Bendigo.

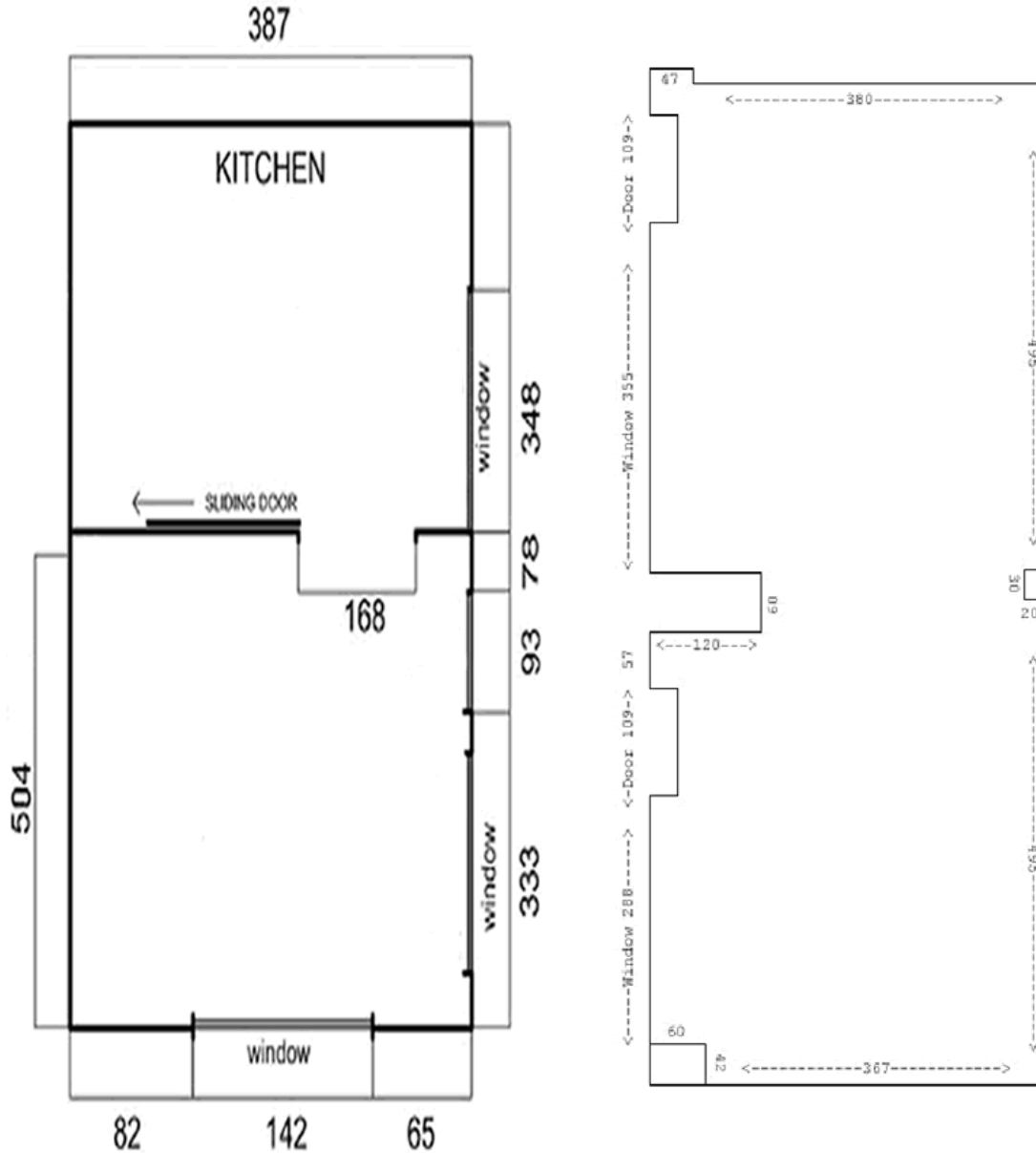
C. THE GALLERY

Location: Allan's Walk Artist Run Space is situated in an arcade running between Hargraves Mall and Pall Mall in the Bendigo CBD approximately 500 metres from Bendigo Railway Station. Bendigo is less than 2 hours by train from Melbourne's Southern Cross Station.

The Space: Allan's Walk provides 2 spaces. (1) An exhibition space adjacent to the Allan's Walk Art Space Reading Room and administration area - 5m x 2.9m, with a height of 3.2m, with one and a half white walls, 2

glass windows and a black wooden floor. (2) A much larger space (9.9m x 4m approx/ height 3.2m) is located in Shop 7 opposite the smaller gallery in Shop 5. Both spaces are lit with gallery lighting. Exhibition furniture is available to use including a number of plinths in various sizes.

Floorplans of galleries: Shops 5 & 7 (not to scale)



D. APPLICATION GUIDELINES

All proposals should contain enough information to communicate the ideas or concepts behind the project, a written explanation of the project, its themes and rationale. Your proposal must include:

Proposal Cover Page: Please supply the following details

- Main contact person and contact details. (address, phones, email, web page)
- The names of all applicants if a group show is being proposed.
- Preferred exhibition times (e.g. Feb-March or Oct-Nov). Preferably more than one option.
- A very short (two sentence) summary description of your proposal.

- Indicate if the proposed work contains audio or other audiovisual material, or has special requirements

Description of the exhibition: *What will be happening during your time at Allans Walk? - please accurately describe the work you wish to exhibit. Attempt to keep this to one (A4) page.*

Closing Date: *The closing date for exhibitions/large projects in our January - June 2011 program is Friday 30th July at 5pm. 2010. However, AWARS encourages submission throughout the year, as gaps occasionally appear in our program. Proposals for one off events, performances, workshops & forums are accepted throughout the year.*

Selection Criteria: *The selection panel assesses each proposal on a number of criteria, including quality and availability of the space at the required time(s). To help us, please address the following issues on a separate page to the description above.*

- How does your work relate to our mission statement?
- How does your proposal develop your artistic vision?
- How will your exhibition/project create outcomes and opportunity for you to develop relationships, dialogue and exchange with other artists?
- Does your exhibition/project have a Central Victorian connection? eg Does it involve local artists and/or the community? Does it address local issues such as place, environment, landscape, history, society, culture, economy, politics, materials.

Curriculum Vitae: *Please provide a C.V. for each person involved in the project. Please keep this to one page per person.*

Support Material: *The quality of your support material is important. It is preferable if the support material relates directly to your exhibition description. If you are making new work, support material that clearly indicates your ideas and work approaches is adequate. You may supply still images and/or audiovisual material. Do not duplicate the same material in two different formats.*

- Slides and/or digital images: A maximum of twelve images for use in proposal is required.
- Slides: All slides must be clearly marked with your name, title, date, dimensions and medium. Do not use adhesive labels on your slides. *Please label with a permanent marker.*
- Digital images: Please provide in jpeg format on CD (readable on PC).
- Audiovisual Material: Allan's Walk can view materials on DVD and Audio CD Maximum duration of A/V material must be 6 minutes. CD or DVD only

You may add a small amount of other support material, such as past publications, invitations, exhibition reviews etc.

Description of Support Material: *Include name, date, medium, and dimensions. Include a brief description of the relation between your support material and proposed show. Please indicate if the material submitted is the work to be exhibited should your proposal be successful.*

- If there is a conceptual/visual gap between your proposal and support material, please describe how you will arrive at that new body of work, and its connection to your past work. For example, if all your past work consists of paintings, and you are proposing a video or installation exhibition, you may want to describe how you will achieve this new work.

E. Submission Information for Applicants

All applications must be typed and submitted via post or delivered by hand (not email). Do not staple your application together.

Delivery via post:

Allan's Walk Artist Run Space
PO Box 809, Bendigo, VIC 3552, Australia

Delivery in person:

Allan's Walk Artist Run Space
Allan's Walk, Bendigo, VIC 3550

To be considered in the advertised round of assessment please ensure that your proposal is received by the advertised Closing Date (see Section D) and NOT post marked by that date.

For further information or to discuss your proposal contact a representative via info@allanswalk.com or call the AWARS on (03) 5442 1753

F. Support to Exhibiting Artists

1. Administration and Curatorial Support:

- 4 week exhibition space, including bump in and out (this maximum time can be negotiated to be of a lesser time period, minimum 1 week)
- Access to the space during exhibition
- Invitation to exhibition and opening / closing celebrations
- Press release to local media with request for interview
- Line listing in TROUBLE
- Promotion via the AWARS website, email-out and print material
- Web archiving, photo-documentation and publications posted on the art space website.
- Artists and/or curators are asked to give an artist talk at some point during the show.
- An AWARS representative also facilitates talks at openings and also for any visiting groups. Artists are encouraged to be involved.
- Assistance with engaging and/or networking with other artists and events

2. Opening Celebration:

- Openings are generally on Saturdays between 3PM- 5PM. This is negotiable.
- The artist will supply refreshments (this may change if funds become available)

3. Additional Information:

- AWARS does not charge commission on work sold.
- Exhibitors are responsible for insuring their work and/or equipment.
- Successful artists proposals and images may be used by AWARS for funding and promotional purposes.

G. What is required from Artists?

- Sign a service agreement and payment of fee (see Section B) on notification of exhibition being accepted.
- Make work in/for Allan's Walk that directly responds to your application
- Present an artist talk
- Sit the space at some time during your show: Thursday Friday 11am-4pm, Saturday 11am-3pm
- Supply content for publicity
- Participate in evaluation activities
- Work cooperatively with Allan's Walk members in the organising of opening events
- Supply refreshments at opening
- Leave gallery walls and floor clean at end of exhibition